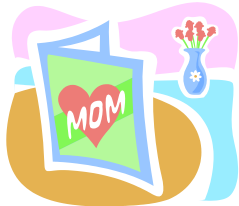


The "Plains" Newsletter

May 2014



Happy Mother's Day!



PLUMBING, HEATING & AIR

2510 Vermont Avenue

Bismarck, ND 58504

701-222-2155

www.northern-plains.com

Hours:

Mon—Thurs: 7am-5pm

Friday: 7am-4pm

FEATURED PRODUCT: KOHLER HYDRORAIL SHOWER COLUMNS

ANNIVERSARIES

Jon A. (Heating & Air)
May 3rd
10 years

Larry T. (Heating & Air)
May 14th
2 years

Jon S. (Heating & Air)
May 18th
4 years

Pat R. (Drilling & Excavating)
May 20th
12 years

Bryan T. (Heating & Air)
May 21st
13 years

The NEW Kohler HydroRail Shower Columns allow you to add a hand held with sidebar to your standard shower system without having to do any remodeling. The rail replaces your existing shower arm and provides an outlet for your shower head as well as a hand held. The built in diverter allows you to switch the water from the shower head to the hand held. They are available in bath/shower, shower, rain head style and hand held only options. The rails come in 5 finishes—polished chrome, polished nickel, brushed nickel, brushed bronze and oil rubbed bronze—to match your existing shower valve.

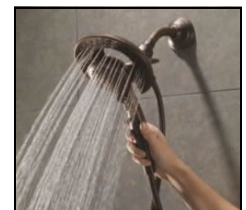


Check out a video on the Kohler HydroRail here.

Interested in the new Kohler HydroRail Shower Columns? Call **Lori** or **Julie** with **Northern Plains Plumbing** at **(701) 222-2155**.

TIPS FOR CHOOSING A SHOWERHEAD

- ◆ **Think about who will be using the shower**—Will it just be you? Your family of 5? The dog? Take into consideration the preferences and needs of each person (or pet) using this shower and showerhead.
- ◆ **Make a list of your preferences and habits**—Do you want a multi-spray function? How much pressure do you need? Do you want something detachable for washing down the kids or pets? Large rain heads give a softer spray while smaller heads can be more effective when rinsing out long hair. Detachable hand showers can be useful for cleaning large showers in addition to regular use. Other more labor intensive options include body sprays & ceiling mount rain heads.



Looking to replace your showerhead? Contact **Lori** or **Julie** at **Northern Plains Plumbing** by calling **(701) 222-2155**.

BMHBA Spring Parade of Homes

April 25-27 & May 2-4, 2014

Friday: 6 p.m.—8:30 p.m.

Saturday: 11 a.m.—5 p.m.

Sunday: Noon—5 p.m.

Check our Facebook & Twitter pages for more information!



Scan this code or check out our social media pages for more information,



FEATURED PRODUCTS: COMFORT HEIGHT TOILETS

Toilets are quite possibly the most important plumbing fixtures in your home. In addition to wanting them to be functional and well flushing, you also want something comfortable. Many people are now making the switch to comfort height toilets. These toilets are taller than your standard toilet which makes them easier to sit on—and more popular with tall people. Take a look at a couple of these great toilet options below.

Toto now offers a competitively priced, good flushing toilet. The Entrada toilet utilizes Toto's E-Max flushing system with a 3" flush valve to provide a powerful flush every time while still being high efficient. Currently only available in white, this toilet can be purchased with a round or elongated bowl.

American Standard's Cadet Pro toilet is one of our most popular options. The Cadet system also features a larger 3" flush valve for a good flush. This toilet comes in both comfort height and standard height options. They also have a concealed trapway option as shown.



Toto Entrada



American Standard Cadet



Words of Wisdom

"Our destiny is shaped by our thoughts and our actions. We cannot direct the wind, but we can adjust the sails."

